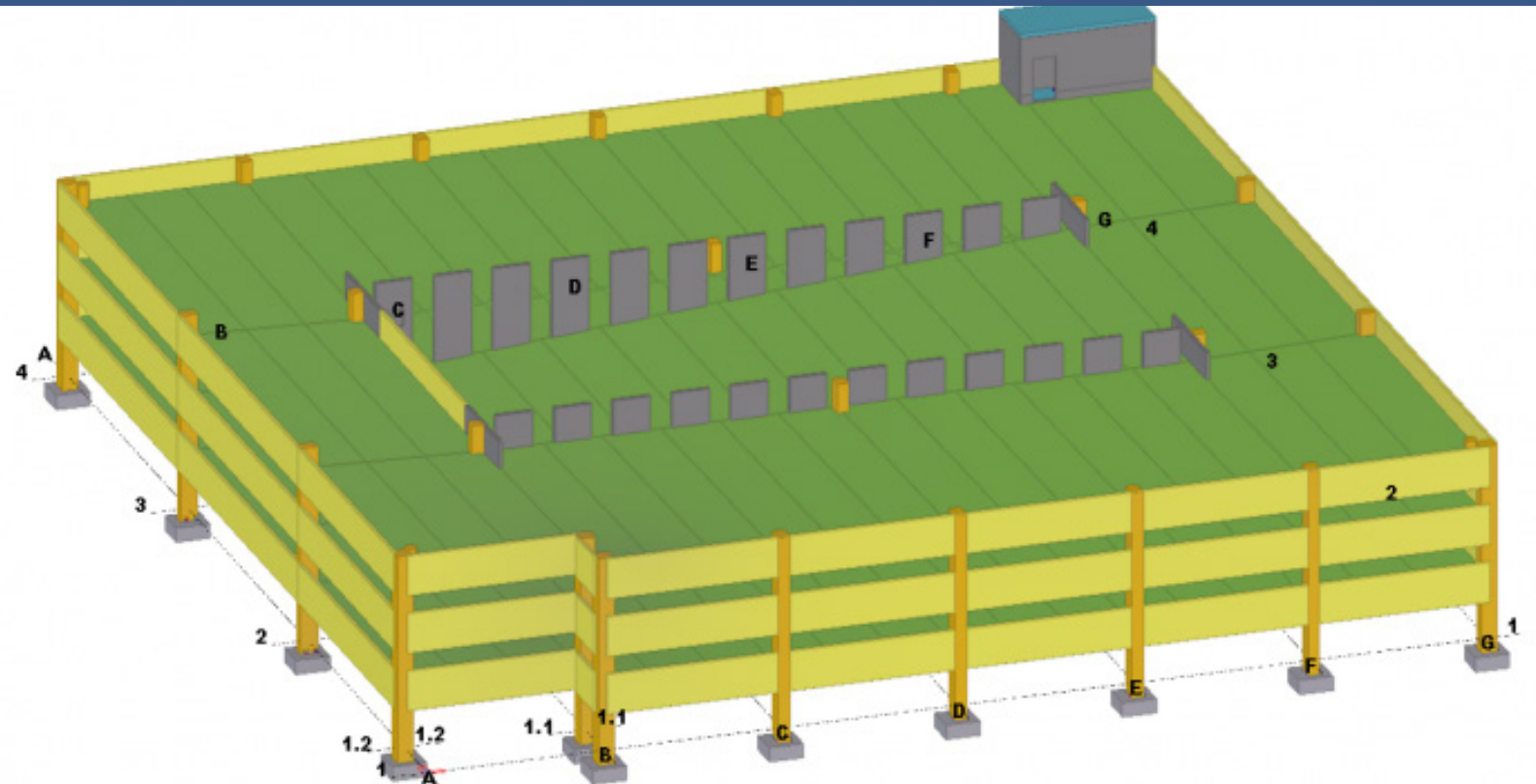




BuildingPoint™

Tekla Constructible Online Training

Tekla Structures: PreCast modeling fundamentals



Tekla Structures: PreCast modeling fundamentals

This extensive course includes everything you need to learn about Tekla Structures as a precast detailer. It consists of an introduction and 14 modules that will teach you and your team how to work efficiently in 3D. The course follows a specific workflow that teaches you how to create a model step-by-step, with all structural elements, reinforcements and details. First steps with Tekla structures must be completed first go here to register: <https://learn.trimble.com/learn/course/external/view/elearning/5479/first-steps-with-tekla-structures>

Content:

Introduction

- Files you need to complete this course

Setup Model

- Create model and setting up properties
- Setting up the grid
- Create views

Creating Foundations

- Model Pad Footings
- Model Strip Footing
- Copy and Move commands

Creating Walls

- Model Stair walls
- Model Shear walls
- Model Ramp walls

Creating Columns, Beams and Spandrels

- Model Columns
- Model Beams
- Model Spandrels

Modeling Double Tee Slabs

- Model double-tee slabs
- Create drainage and modify ramp
- Copy floors and modify double-tee ramp
- Model cast-in place ramp
- Model roof slab
- Top-in form face

Modeling Stairs

- Model stairs

Modeling cuts and blockouts

- Cutting tools
- Edge chamfers
- Model blockouts

Using reference models

- Insert a reference model
- Model coordination

About custom components

- What is a custom component
- Custom component types
- Parametric custom components

Creating custom components

- Create a simple opening
- Create a base plate
- Create an anchor rod
- Create column to pad footing connection
- Create IT beam to column connection
- Create a ramp wall to footing connection
- Create custom thumbnails
- Import and export

Sketch editor

- Sketch a parametric profile
- Add dimensions constraints and chamfer to the profile
- Confirm default values for the sketch
- Edit the profile
- Export and import

Modeling reinforcement (rebars)

- Manual reinforcement tools
- Automated reinforcement tools

Numbering models

- Number the model
- Check the number result
- Troubleshooting

Investment	
Duration:	20 hrs
Price:	\$2,200.00 per person

**3+ PEOPLE ONLY \$6,000
PER CLASS**

To enroll in this course contact us at sales@buildingpoint.ca



BuildingPoint Canada:
3900 North Fraser Way
Burnaby, BC V5J 5H6
1(866) 773.6926 | www.buildingpoint.ca

